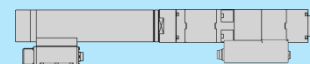


DS 57 series

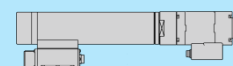
A) DS 57 MDW with torque transducer



Type	Max. torque Nm	Application area Nm	Max. speed rpm	Angle resolution Degree [°]	Article number
DS 57 / 25 MDW	25	5 – 25	1050	0,1	DS-2570025
DS 57 / 50 MDW	50	10 – 50	1050	0,1	DS-2570050
DS 57 / 70 MDW	70	14 – 70	800	0,1	DS-2570070
DS 57 / 90 MDW	90	18 – 90	430	0,1	DS-2570090
DS 57 / 140 MDW	140	28 – 140	430	0,1	DS-2570140

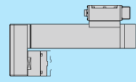
Torque accuracy 0,5 %, torque tolerance better 5 % according to ISO 5393

B) DS 57 SA without torque transducer

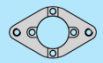


Type	Max. torque Nm	Application area Nm	Max. speed rpm	Angle resolution Degree [°]	Article number
DS 57 / 25 SA	25	5 – 25	1050	4,5	DS-2571025
DS 57 / 50 SA	50	10 – 50	1050	4,5	DS-2571050
DS 57 / 70 SA	70	14 – 70	800	2,2	DS-2571070
DS 57 / 140 SA	140	28 – 140	430	1,2	DS-2571140

Torque accuracy 5 %

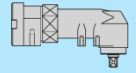
C) Motor offset

Type	Article number
Motor offset V2	DS-2573010

D) Mounting flange

Type	Article number
Mounting flange	DS-2573000

Always included, but not available for the variants E) and F)

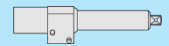
E) Angle head

Nutrunner MDW / SA	Max. speed rpm	Type	Article number
DS 57 / 50 WA	1000	WA (1/2", max. 130 Nm)	DS-2573015
DS 57 / 70 WA	760		
DS 57 / 140 WA	420		

Torque tolerance better 8 % according to ISO 5393

F) Output offset

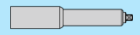
Type	Article number
Output offset V1	DS-2573005

G) Spring output 50 mm with self start initiator

Type	Article number
Self start, square drive 1/2"	DS-2573045
Self start, square drive 3/8"	DS-2573050

H) Spring output with square drive 1/2"

Type	Article number
Spring output 50 mm	DS-2573025
Spring output 100 mm	DS-2573035

I) Spring output with square drive 3/8" (max. 50 Nm)

Type	Article number
Spring output 50 mm	DS-2573030
Spring output 100 mm	DS-2573040

J) Spring output 50 mm with depth initiator

Type	Article number
Depth initiator, square drive 1/2"	DS-2573055
Depth initiator, square drive 3/8" *	DS-2573065

* max. 50 Nm

K) Stump output with square drive 1/2"

Type	Article number
Stump output ST	DS-2573020

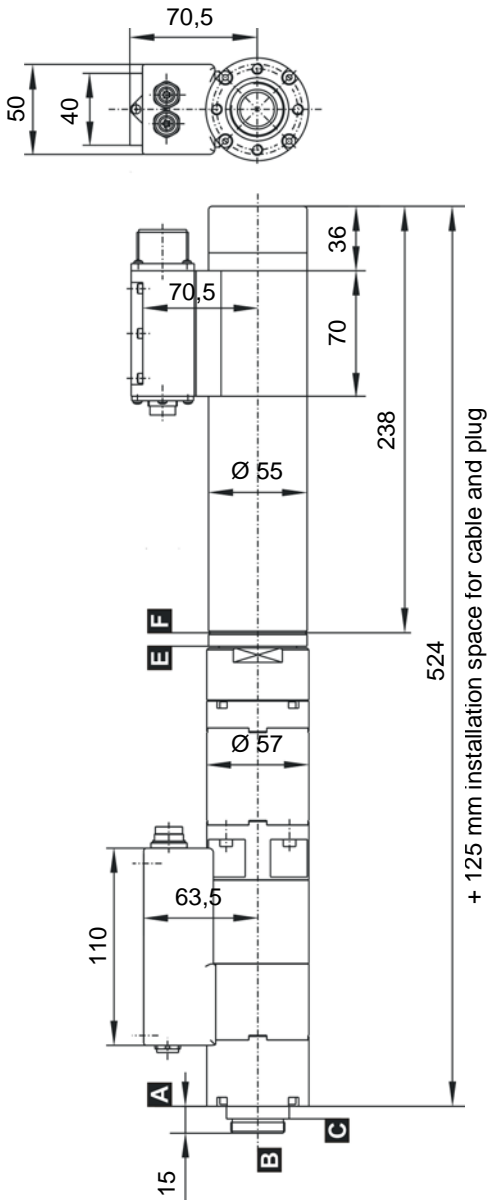
Cable set

Cables for interconnection between nutrunner and control system

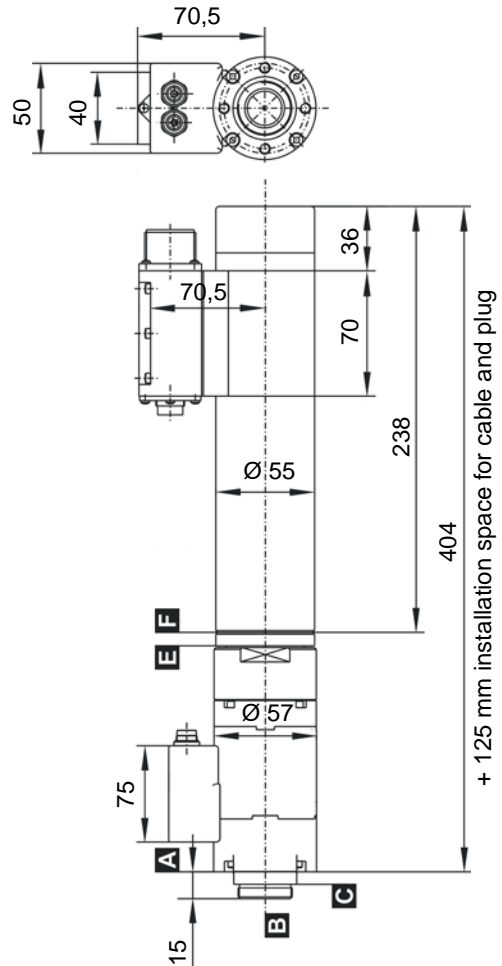
Type	Cable length	Article number
Cable set DS57 / QMP80 / SMP400 DSP05	5 m	MK-0809005
Cable set DS57 / QMP80 / SMP400 DSP10	10 m	MK-0809010
Cable set DS57 / QMP80 / SMP400 DSP15	15 m	MK-0809015
Cable set DS57 / QMP80 / SMP400 DSP05 - with shielding	5 m	MK-0809105
Cable set DS57 / QMP80 / SMP400 DSP10 - with shielding	10 m	MK-0809110
Cable set DS57 / QMP80 / SMP400 DSP15 - with shielding	15 m	MK-0809115

Technical drawings DS 57 series

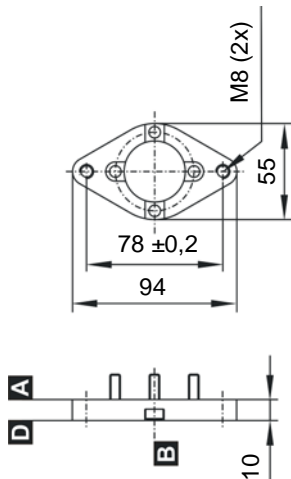
DS 57 MDW



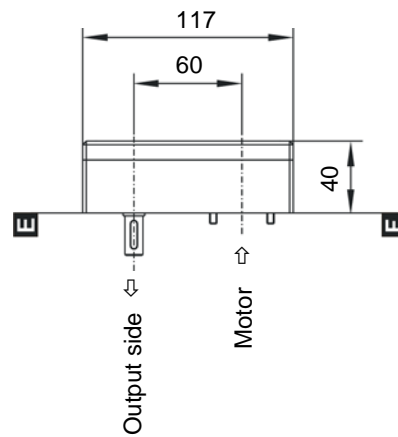
DS 57 SA



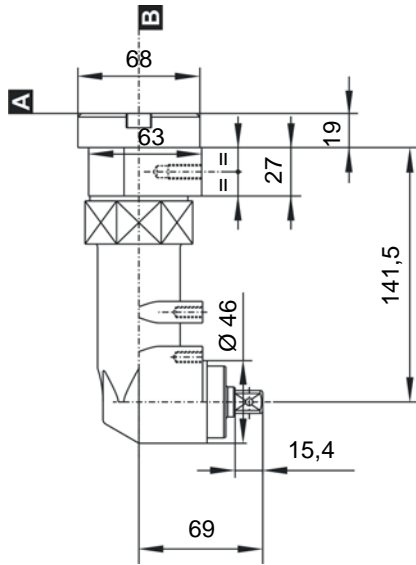
Mounting flange



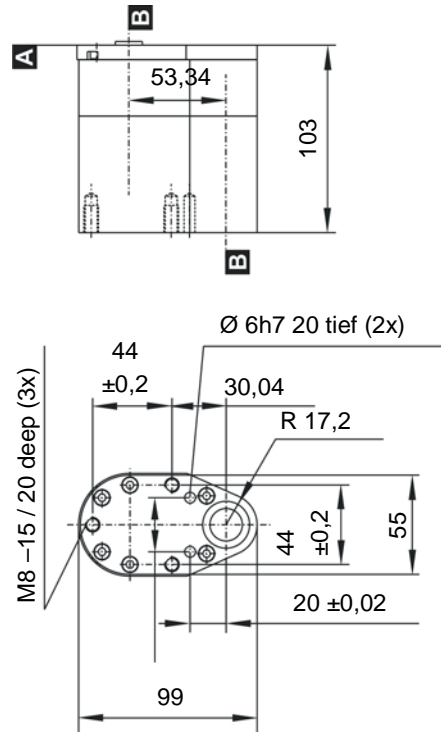
Motor offset



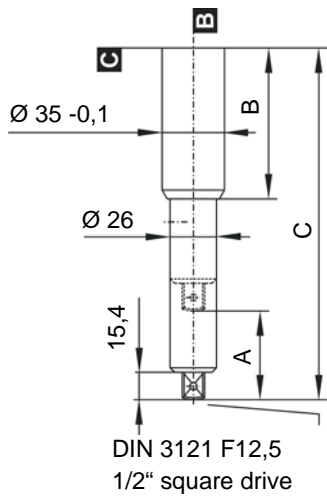
Angle head WA



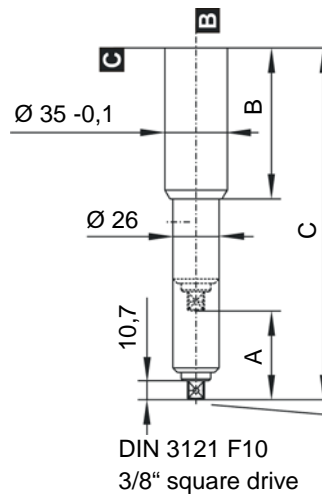
Output offset



Spring output 1/2" square drive

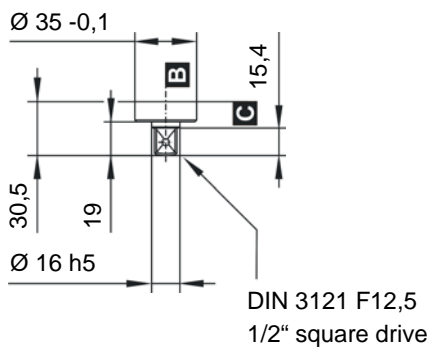


Spring output 3/8" square drive



Type (spring deflexion)	A mm	B mm	C mm
F50	50	85	198
F100	100	135	298

Stump output



Self start

