

## DS 34-P series

### A) DS 34 MDW-P with torque transducer



| Type              | Max. torque<br>Nm | Application area<br>Nm | Max. speed<br>rpm | Angle resolution<br>Degree [°] | Article number    |
|-------------------|-------------------|------------------------|-------------------|--------------------------------|-------------------|
| DS 34 / 025 MDW-P | 2,5               | 0,5 – 2,5              | 880               | 0,1                            | <b>DS-2342025</b> |
| DS 34 / 05 MDW-P  | 5                 | 1 – 5                  | 880               | 0,1                            | <b>DS-2342050</b> |
| DS 34 / 10 MDW-P  | 10                | 2 – 10                 | 1540              | 0,1                            | <b>DS-2342100</b> |
| DS 34 / 15 MDW-P  | 15                | 3 – 15                 | 1540              | 0,1                            | <b>DS-2342150</b> |

Torque accuracy 0,5 %, torque tolerance better 5 % according to ISO 5393

### B) DS 34 SA-P without torque transducer



| Type             | Max. torque<br>Nm | Application area<br>Nm | Max. speed<br>rpm | Angle resolution<br>Degree [°] | Article number    |
|------------------|-------------------|------------------------|-------------------|--------------------------------|-------------------|
| DS 34 / 025 SA-P | 2,5               | 0,5 – 2,5              | 880               | 3,3                            | <b>DS-2343025</b> |
| DS 34 / 05 SA-P  | 5                 | 1 – 5                  | 880               | 3,3                            | <b>DS-2343050</b> |
| DS 34 / 10 SA-P  | 10                | 2 – 10                 | 1540              | 1,7                            | <b>DS-2343100</b> |
| DS 34 / 15 SA-P  | 15                | 3 – 15                 | 1540              | 1,7                            | <b>DS-2343150</b> |

Torque accuracy 5 %

### C) Spring output



| Type                                     | Article number    |
|--|-------------------|
| Spring output 30 mm                      | <b>DS-2403025</b> |
| Spring output 30 mm with depth initiator | <b>DS-2403045</b> |
| Spring output 50 mm                      | <b>DS-2403030</b> |
| Spring output 50 mm with depth initiator | <b>DS-2403050</b> |

### 1) Square drive 1/4"



| Type              | Article number    |
|-------------------|-------------------|
| Square drive 1/4" | <b>DS-2403715</b> |

### 2) Square drive 3/8"



| Type              | Article number    |
|-------------------|-------------------|
| Square drive 3/8" | <b>DS-2403720</b> |

### 3) Hexagonal quick change chuck D6,3



| Type                            | Article number    |
|---------------------------------|-------------------|
| Bit shaft precision-guide 13 mm | <b>DS-2403705</b> |
| Bit shaft precision-guide 24 mm | <b>DS-2403710</b> |

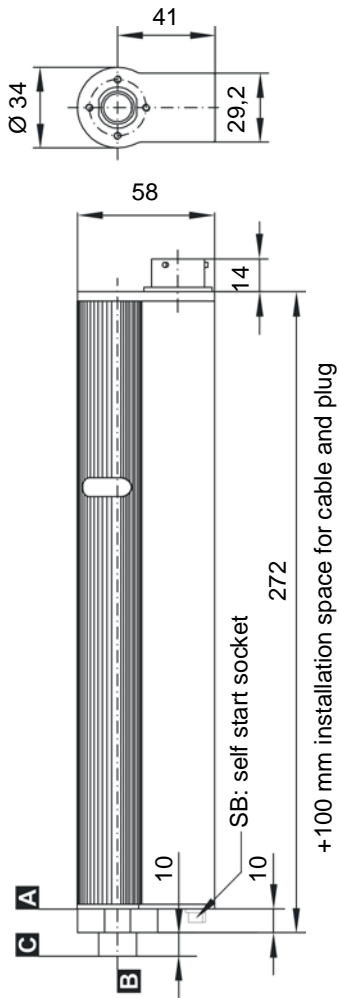
### Cable

Cable for interconnection between nutrunner and control system

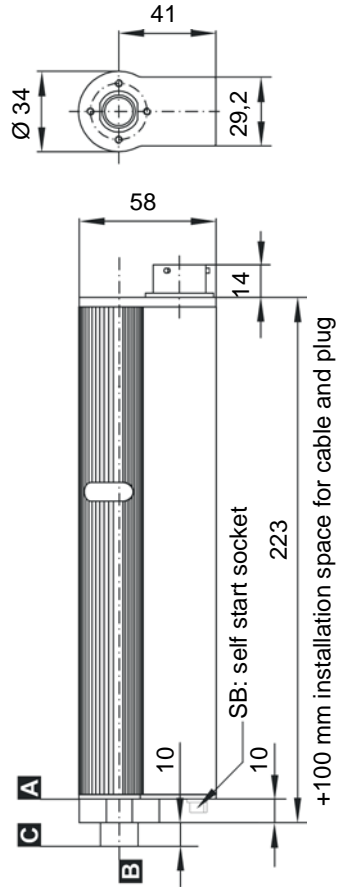
| Type  | Cable length | Article number    |
|---|--------------|-------------------|
| Interconnecting cable DS34 / DS44 / SMP300   DSP05                    | 5 m          | <b>MK-2409005</b> |
| Interconnecting cable DS34 / DS44 / SMP300   DSP10                    | 10 m         | <b>MK-2409010</b> |
| Interconnecting cable DS34 / DS44 / SMP300   DSP15                    | 15 m         | <b>MK-2409015</b> |
| Interconnecting cable DS34 / DS44 / SMP300   DSP05 - angled 90° right | 5 m          | <b>MK-2409105</b> |
| Interconnecting cable DS34 / DS44 / SMP300   DSP10 - angled 90° right | 10 m         | <b>MK-2409110</b> |
| Interconnecting cable DS34 / DS44 / SMP300   DSP15 - angled 90° right | 15 m         | <b>MK-2409115</b> |
| Interconnecting cable DS34 / DS44 / SMP300   DSP05 - angled 90° left  | 5 m          | <b>MK-2409205</b> |
| Interconnecting cable DS34 / DS44 / SMP300   DSP10 - angled 90° left  | 10 m         | <b>MK-2409210</b> |
| Interconnecting cable DS34 / DS44 / SMP300   DSP15 - angled 90° left  | 15 m         | <b>MK-2409215</b> |

# Technical drawings DS 34-P series

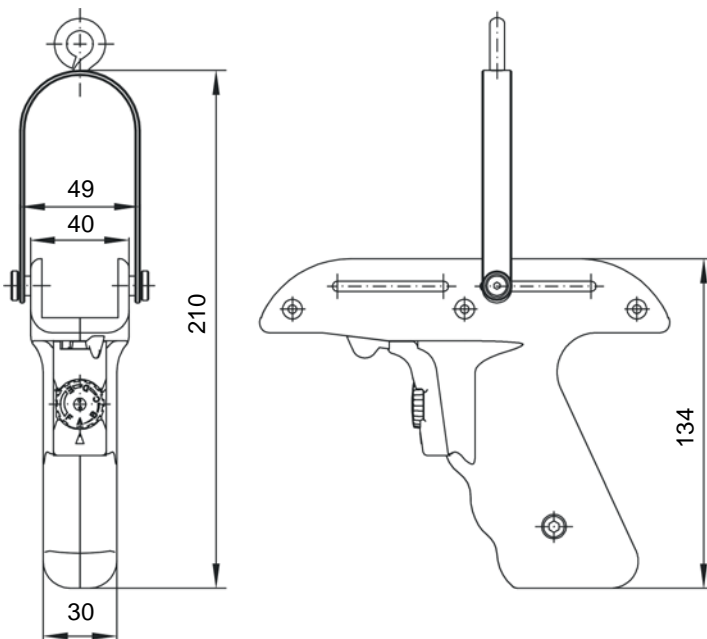
DS 34 MDW



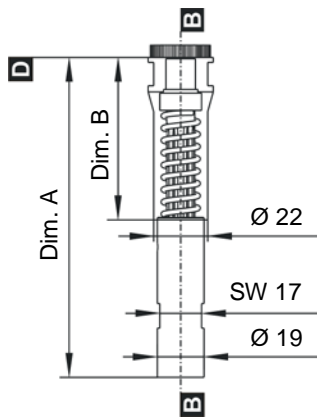
DS 34 SA



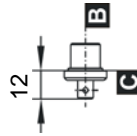
Pistol grip



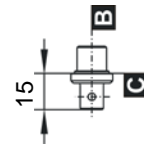
**Spring output**



**Square drive DIN 3121 F6,3**



**Square drive DIN 3121 F10**

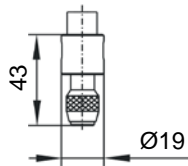
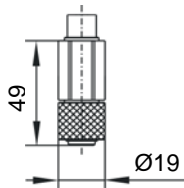


| Spring deflexion | Dimension A<br>mm | Dimension B<br>mm |
|------------------|-------------------|-------------------|
| 30 mm            | 130               | 66                |
| 50 mm            | 150               | 86                |

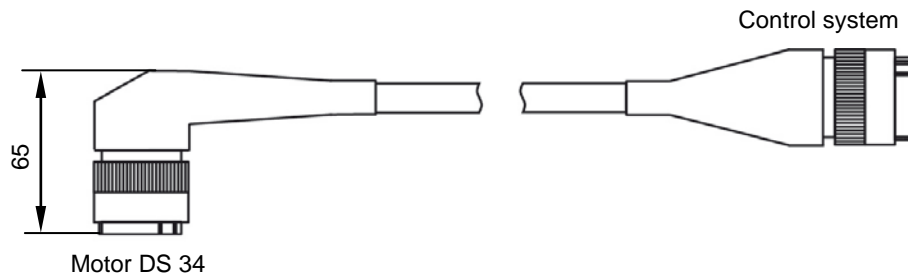
**Hexagonal quick change chuck DIN 3126 D6,3**

Bit shaft precision-guide 24 mm

Bit shaft precision-guide 13 mm



**Interconnecting cable 90° angled**



Connector plug 90° left

Connector plug 90° right

