

SMP 500 series

A) SMP 500 basic version Press 1) with 100 mm, 2) with 200 mm, 3) with 400 mm stroke



Type	Stroke mm	Max. speed mm/s	Article number
SMP 500 / XX 100 V2 DR 00 00	100	150	SMP-503001
SMP 500 / XX 200 V2 DR 00 00	200	150	SMP-503002
SMP 500 / XX 400 V2 DR 00 00	400	150	SMP-503004

Resolution length (stroke) measurement 0,003 mm, length (stroke) repeat accuracy 0,01 mm by about 20 mm/s
Tool bracket with mounting drill holes

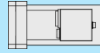
B) SMP 500 execution force sensor 20 kN / 30 kN / 50 kN / 70 kN



Type	Max. force kN	Application area kN	Article number
Force sensor 20 kN for SMP 500	20	4 - 20	SMP-500020
Force sensor 30 kN for SMP 500	30	6 - 30	SMP-500030
Force sensor 50 kN for SMP 500	50	10 - 50	SMP-500050
Force sensor 70 kN for SMP 500	70	14 - 70	SMP-500070

Force accuracy 1 %

C) Motor force-hold-break



Type	Article number
Motor force-hold-break MHB	SMP-

Accessories

Type	Article number
Portal frame for SMP 500 (according to customer specification)	SMP-5008000
C-frame for SMP 500 (according to customer specification)	SMP-5008500

Cable

Cables for interconnection between press-in unit and control system

Type	Cable length	Article number
Cable set DS80 / QMP100/140 / SMP500 DSP05	5 m	MK-1009005
Cable set DS80 / QMP100/140 / SMP500 DSP10	10 m	MK-1009010
Cable set DS80 / QMP100/140 / SMP500 DSP15	15 m	MK-1009015
Cable set DS80 / QMP100/140 / SMP500 DSP05 - with shielding	5 m	MK-1009105
Cable set DS80 / QMP100/140 / SMP500 DSP10 - with shielding	10 m	MK-1009110
Cable set DS80 / QMP100/140 / SMP500 DSP15 - with shielding	15 m	MK-1009115

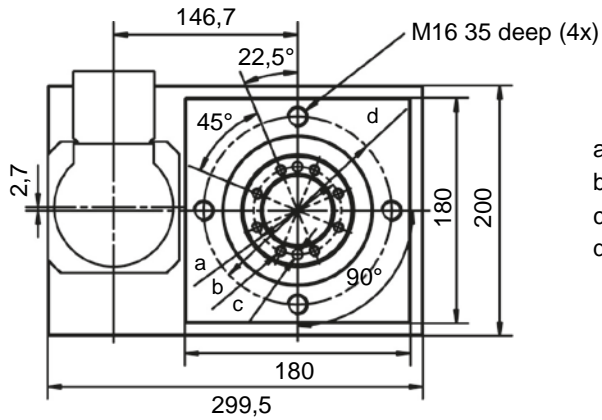
Maintenance accessories

QMP / SMP Service package

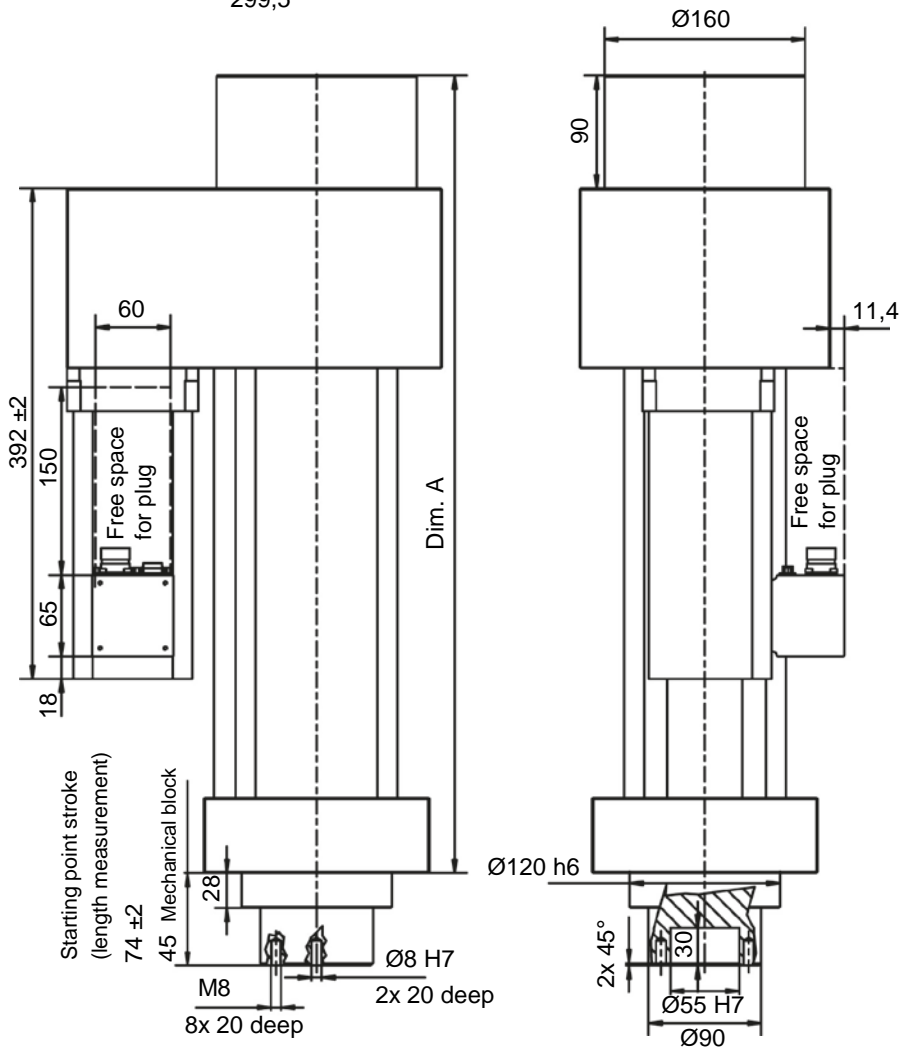
Type	Article number
Lubrication set (grease gun, armoured hose, grease cartridge and lubrication tube set)	DSM-281990

Technical drawings SMP 500 series

SMP 500 /20/30/50/70 V2 (Motor offset)



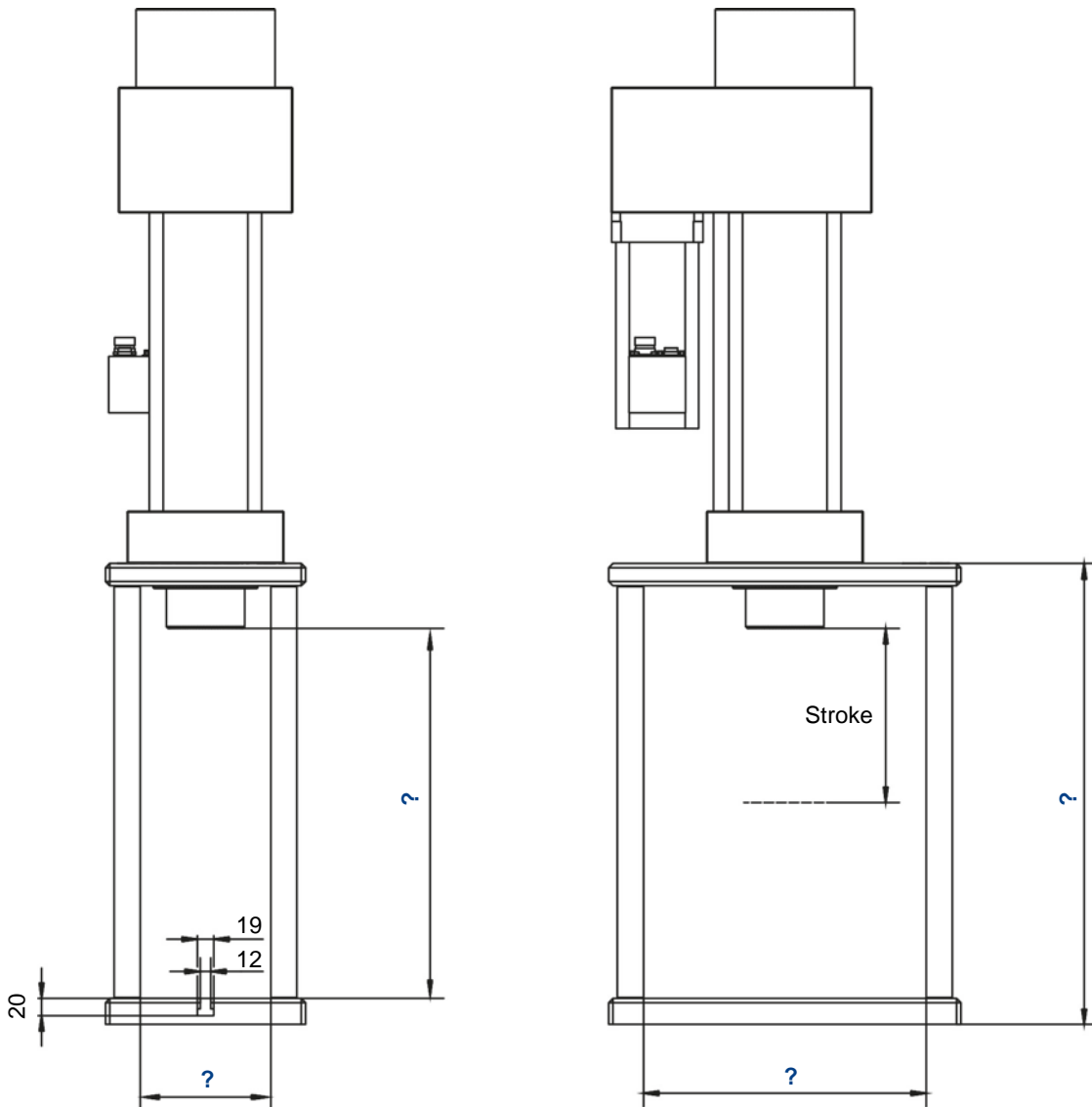
- a: PCD Ø70
- b: M8
- c: Ø8 H7
- d: PCD Ø150



Type	A mm
	/20/30/50/70
SMP 500 V2 100 mm stroke	537 ±2
SMP 500 V2 200 mm stroke	637 ±2
SMP 500 V2 400 mm stroke	837 ±3

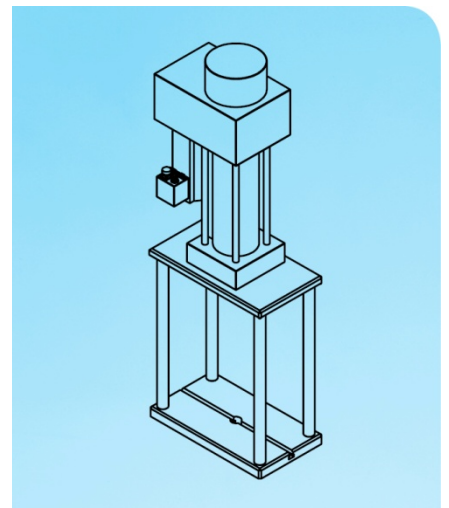
Portal frame

for press-in units of the QMP/SMP series



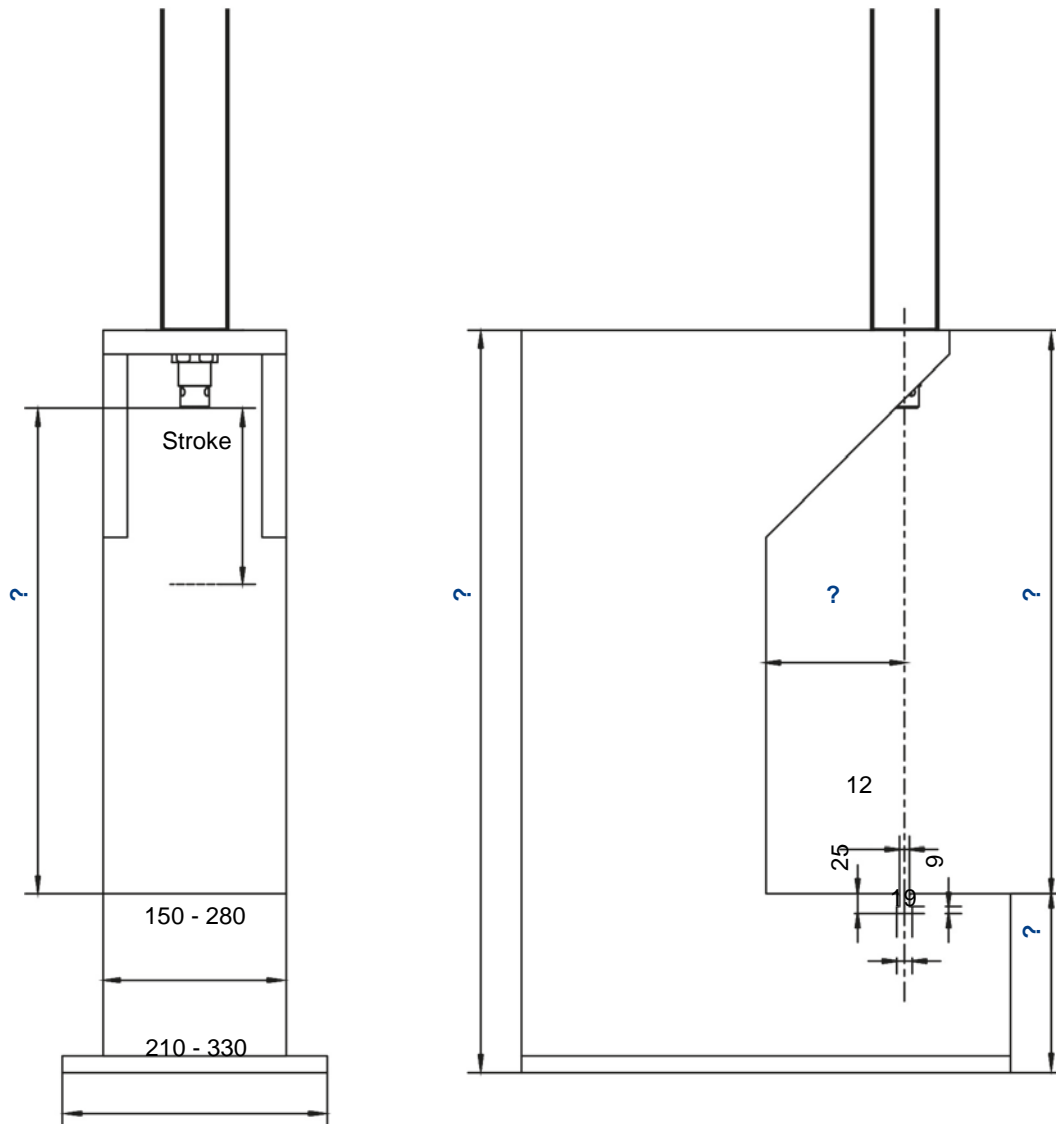
Portal frame, manufactured acc. to customers specification. Depending on the selected press, the dimensions marked with a question mark, can be defined individually.

Please gather dimensions of the press-in unit from the corresponding drawing.



C-frame

for press-in units of the QMP/SMP series



C-frame, manufactured acc. to customers specification. Depending on the selected press, the dimensions marked with a question mark, can be defined individually.

Please gather dimensions of the press-in unit from the corresponding drawing.

